



**SAP**

# MIRJAM METZLER

Product Manager IoT Moving Assets  
SAP

---

**The Future of Enterprise Mobility  
– Put Your Vehicles into Business**

---

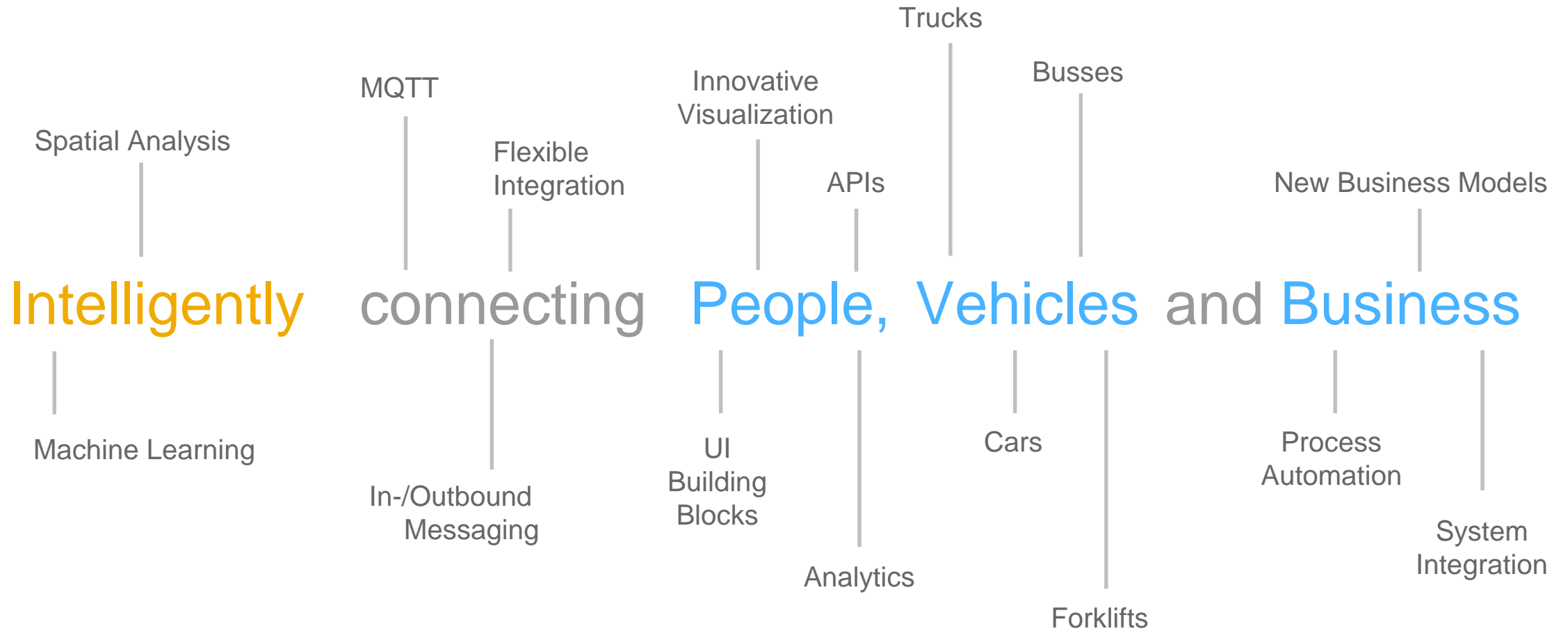


It's time to  
**Reimagine**  
infinite possibilities

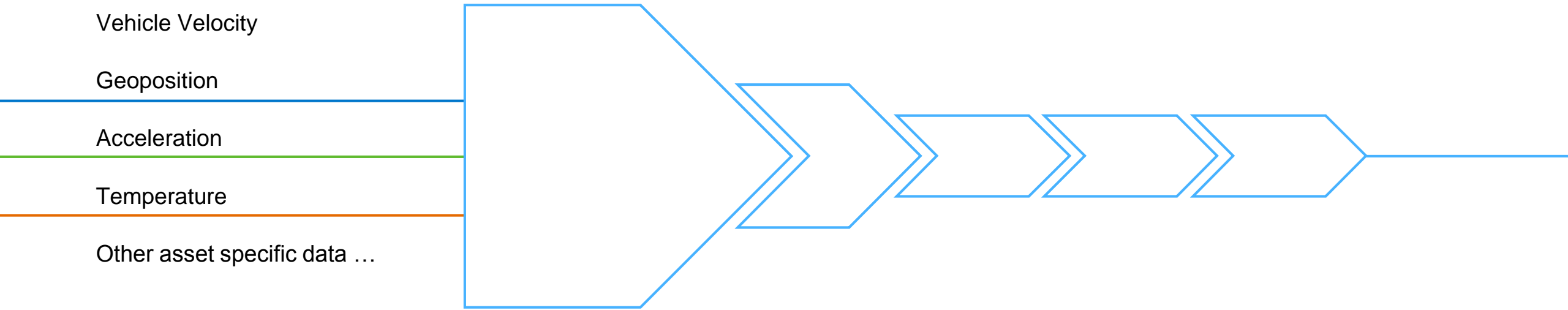
SAPHILA<sup>o</sup> 2017

HOSTED BY  
 AFSUG  
an SAP user group

SUPPORTED BY  

# Unstructured Vehicle Data - Huge Potential for new Business Opportunities



## Big Data



Unstructured Live Data



Real-time

## Smart Data



Pattern Detection



Prediction



Context Added Value

## Business Processes



Enrichment of existing processes

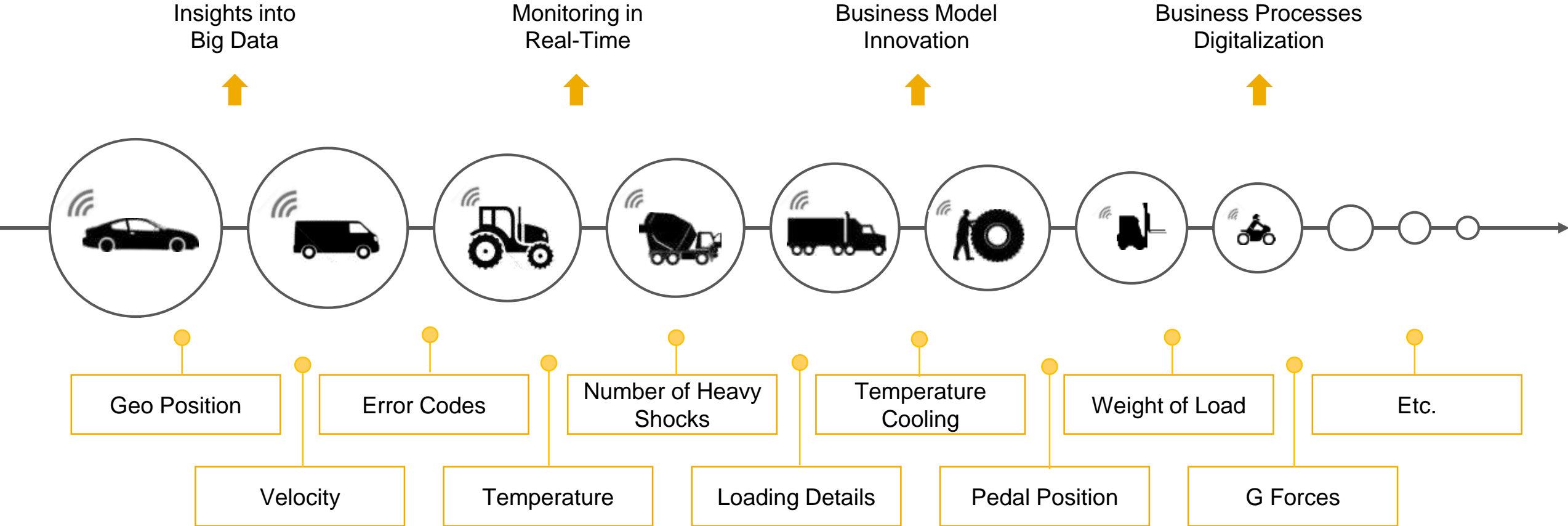


New business opportunities

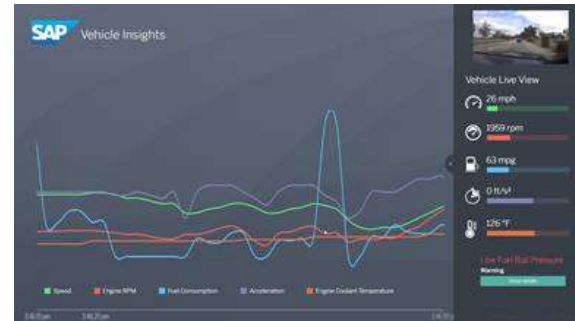


New business models

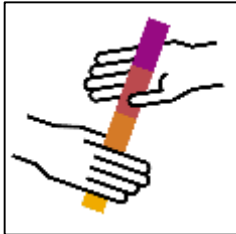
# SAP Internet of Things for Moving Assets: All Vehicles – All Data



# Live Demo

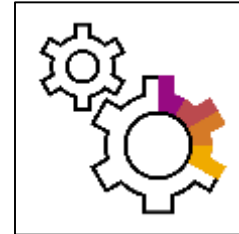


# SAP Vehicle Insights – Run and Build Applications



## Run Fleet | Logistics | Mobility

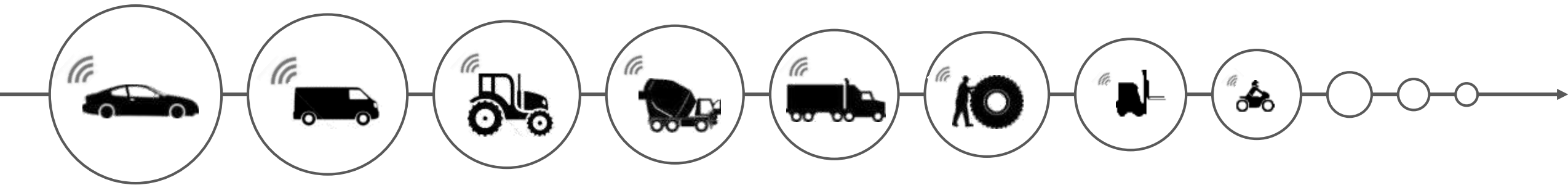
Build the best services and user interfaces that help our customers to innovate their business



## Build

Provide the best services and platform approach for customers and partners to build their application on

### SAP Vehicle Insights Application Platform



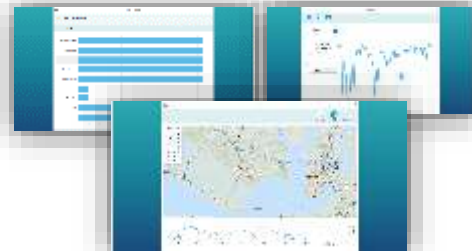
# Broad Variety of Scenarios: Re-imagine the World of Moving Assets



Car fleet analytics



Remote vehicle diagnostics



Commercial fleet management



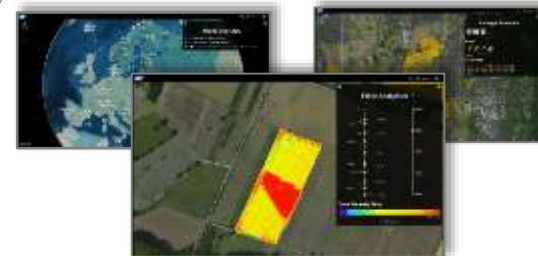
Connected Logistics & Delivery



Usage based insurance



Digital farming



And others to be discovered...



# Live Demo





# SAP Vehicle Insights: A cloud-based analytic Service Platform



## Business Value

- Enables **various business models** by integrating vehicle telematics data and analytical insights.
- **Collects, maps and analyzes** vehicle and equipment real-time sensor data
- Data can be integrated with business and customer data to offer **new business opportunities**

## Key features of SAP Vehicle Insights



Extensibility

Create and run customer-specific scenarios using a **robust scalable development platform**



Analytic Insights

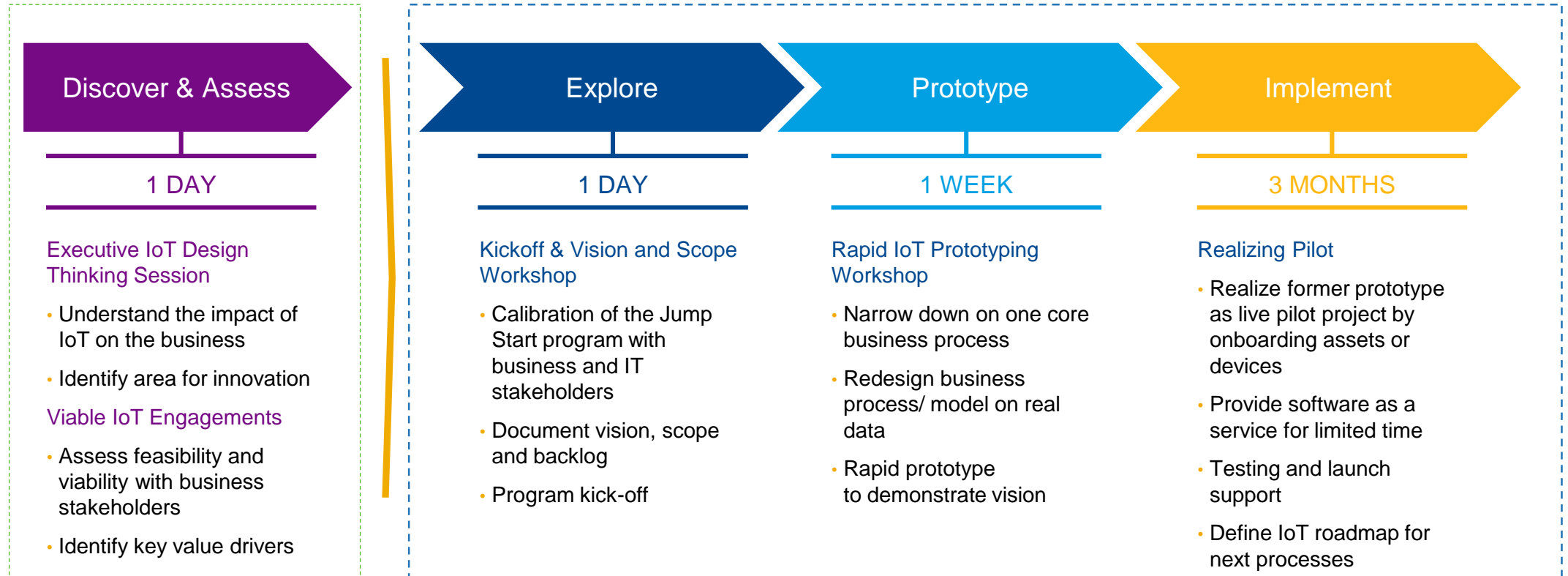
Run **real-time evaluation and predictions** on vehicle, fleet, context and business data



Visualization

**Visualize real-time data** according to business needs with modern user interface technology

# How to get started?





THANK YOU

 It's time to  
**Reimagine**  
infinite possibilities



SAPHILA<sup>o</sup> 2017

HOSTED BY



SUPPORTED BY

