



ERIC KREFT

AfriSam South Africa /
Senior Business Applications Manager

Creating Concrete Possibilities using
Standard SAP tools and technologies



SAPHILA 2017

HOSTED BY



SUPPORTED BY



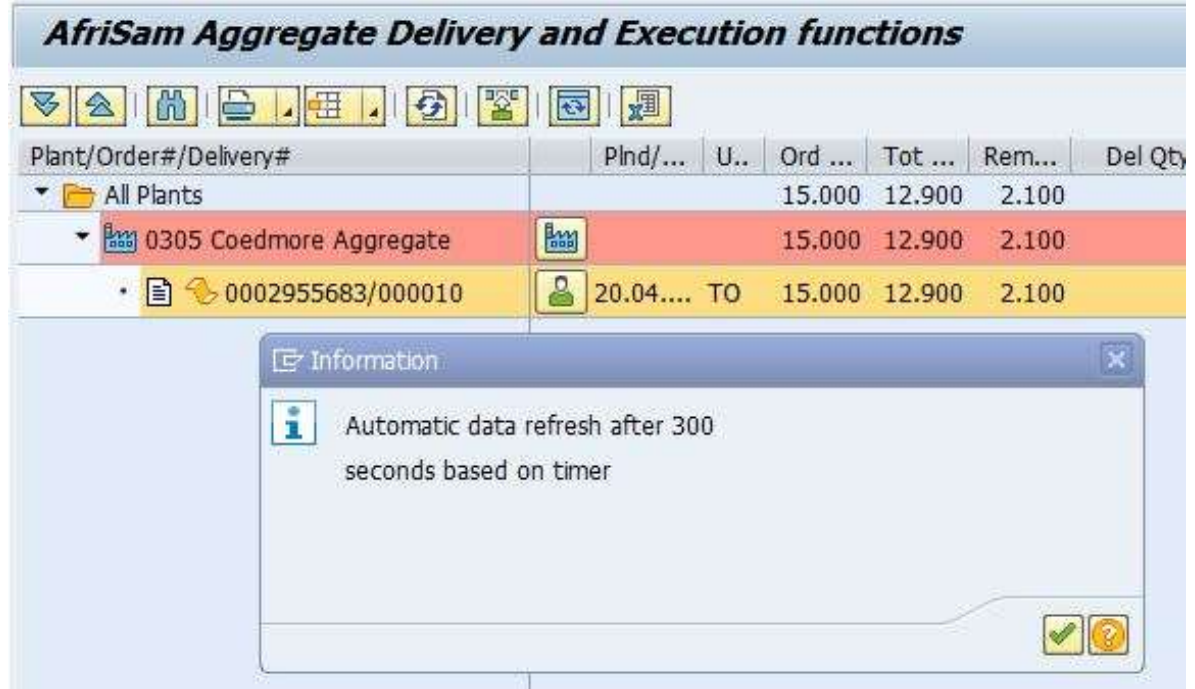


The Background



- AfriSam on SAP R3 since 1995!
- Some Business Units on legacy systems out of maintenance
- Evaluation of SAP Standard tools vs “Other – niche, best of breed etc”

- Use WEB interface or SAPGUI?
- On various projects it was confirmed the GUI was more stable and easier to debug
- Also lots of options!



AfriSam Aggregate Delivery and Execution functions

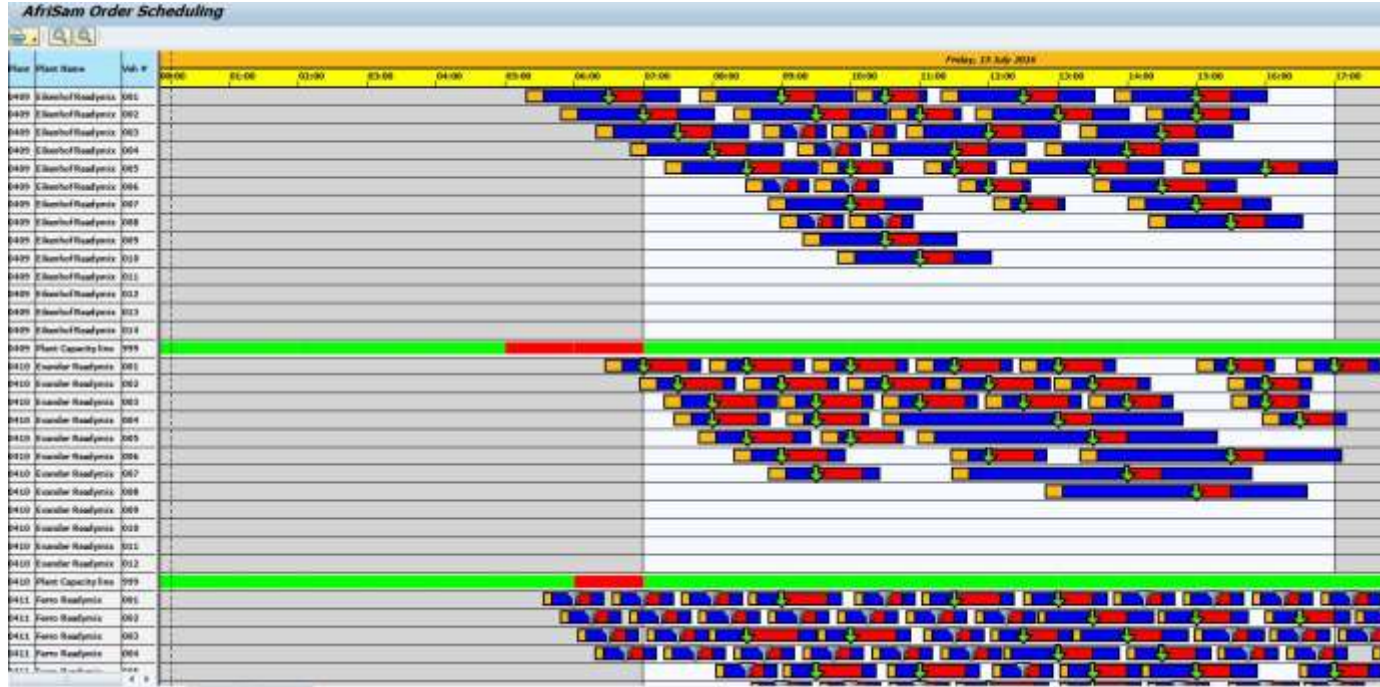
Plant/Order#/Delivery#	Plnd/...	U..	Ord ...	Tot ...	Rem...	Del Qty
▼ All Plants			15.000	12.900	2.100	
▼ 0305 Coedmore Aggregate			15.000	12.900	2.100	
• 0002955683/000010	20.04....	TO	15.000	12.900	2.100	

Information

Automatic data refresh after 300 seconds based on timer

- What can be done?

Charts in the Standard GUI using custom code with standard configuration for bar charts in the IMG.

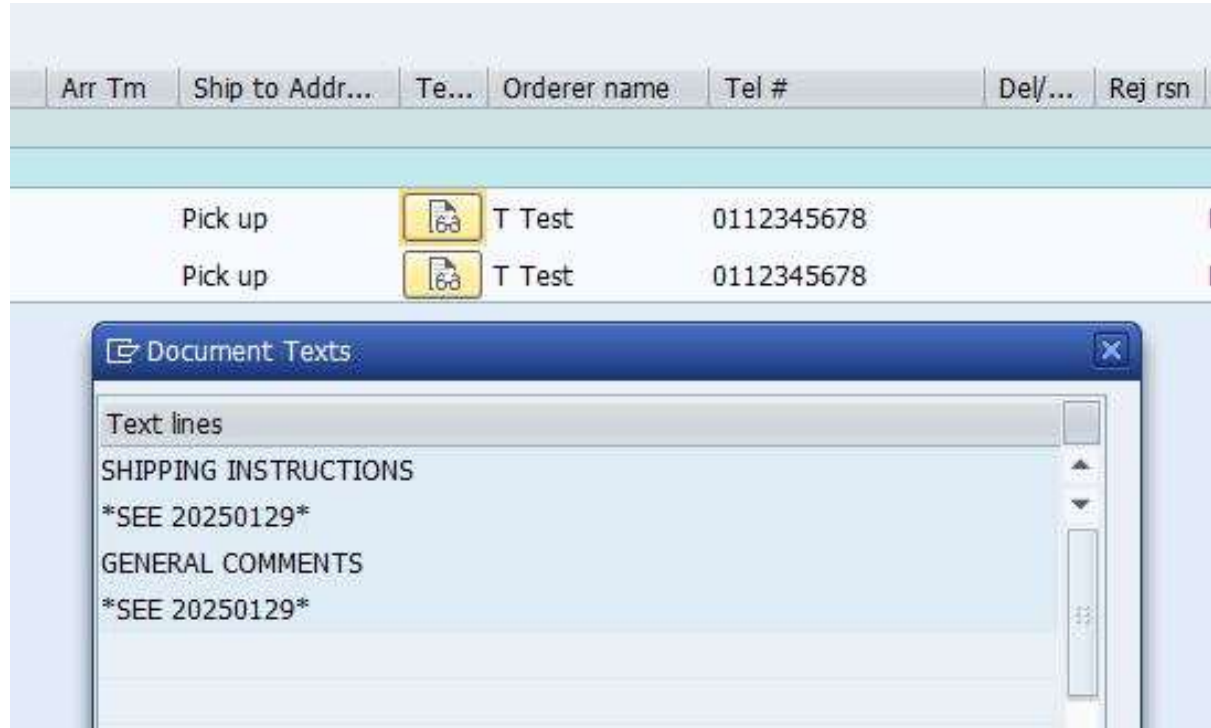


What about capacity graphs?





Can SAP really do that?

Popup links to provide long text information



The screenshot displays a software interface with a table of order information. The table has columns for 'Arr Tm', 'Ship to Addr...', 'Te...', 'Orderer name', 'Tel #', 'Del/...', and 'Rej rsn'. Two rows are visible, both with 'Pick up' in the 'Arr Tm' column, 'T Test' in the 'Orderer name' column, and '0112345678' in the 'Tel #' column. A yellow icon with a document symbol is positioned between the 'Te...' and 'Orderer name' columns for each row. A popup window titled 'Document Texts' is open, showing a list of text lines: 'SHIPPING INSTRUCTIONS' and 'GENERAL COMMENTS', both followed by the text '*SEE 20250129*'. The popup window has a blue header and a close button in the top right corner.

Arr Tm	Ship to Addr...	Te...	Orderer name	Tel #	Del/...	Rej rsn
Pick up			T Test	0112345678		
Pick up			T Test	0112345678		

Document Texts

Text lines

SHIPPING INSTRUCTIONS

SEE 20250129

GENERAL COMMENTS

SEE 20250129

Some useful SAP functions – what you get for free!!!

```
CALL FUNCTION 'POPUP_TO_DISPLAY_TEXT'
```

```
CALL FUNCTION 'POPUP_GET_VALUES_USER_HELP'
```

```
ENDIF.  
CALL FUNCTION 'POPUP_DISPLAY_STRINGS'  
EXPORTING
```





The screenshot displays the SAP Weighbridge interface. A dialog box titled "Link to Scale FAILED-Enter Manual ..." is open, showing the following fields:

Weighbridge reading	0.000
Tare weight	0.000
Manual reason	<input type="checkbox"/>

Below the dialog box, there are two buttons: a green checkmark button and a red X button. The background interface shows various input fields and buttons, including "Tare Truck" and "Get Gross Weight".

- SAP standard tools.
- For example Weighbridge interface standard OCX
- Use Plant connector, standard RFC etc. Real time connection to the weighbridge – no 3rd party tools and no uploads / downloads

Sales Reason for rejection

Valid from	21.04.2017	Valid
Sales Office	Z010 BCM GT Rooikraal	Pricin
Unloading Point	-29.880718,30.902599	
Name	Joe test	
Telephone	0112345678	
Price Zone	148 KwaDukuza	
Customer Value Manag	005 CompetitiveLastChance	

Create Multiprod Quotation: Overview

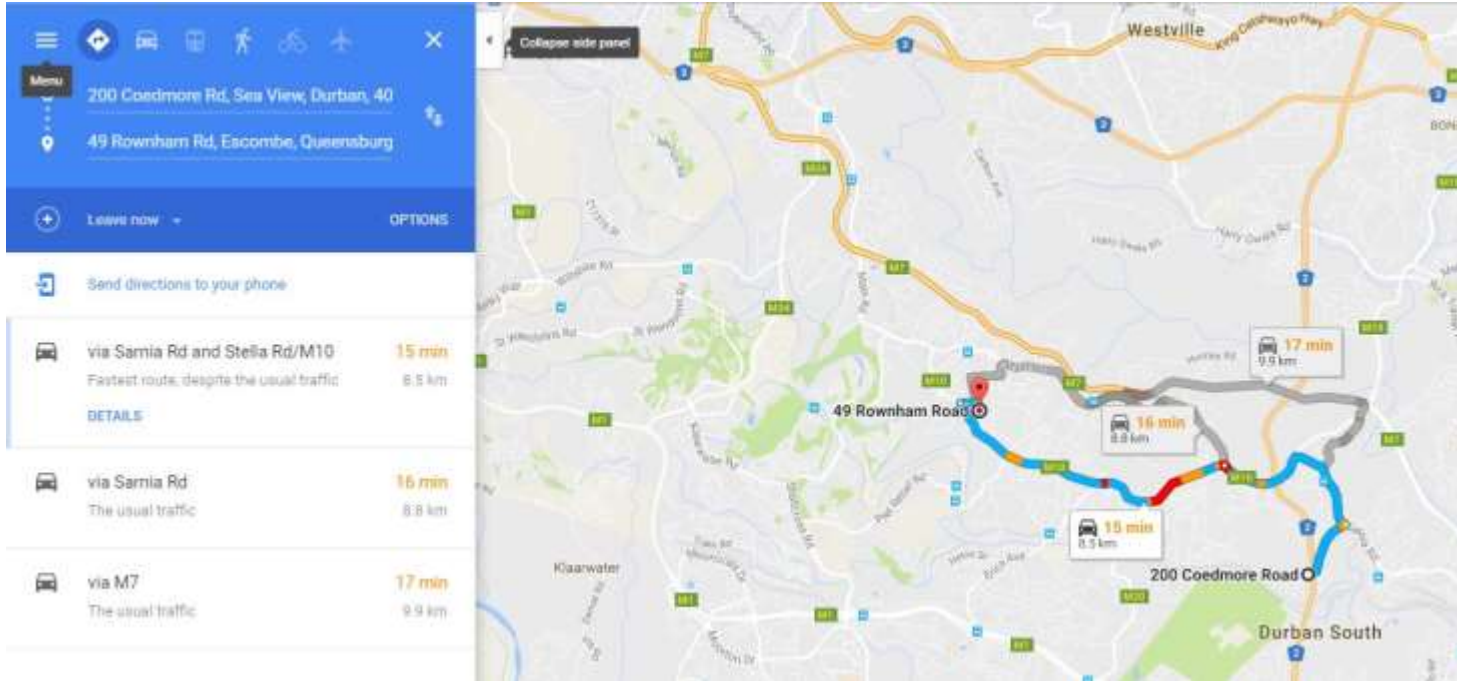
?

Please check the DRIVING distance on the following link!!

<https://maps.google.com/maps?saddr=-29.901879,30.951470&daddr=-29.880718,30.902599>

Open link Do not open

- Use GPS as key for all logistics issues – Geocoding too unreliable



Travel times and distances based on Plant to Customer using GPS link from SAP. Also for Transporter compensation

- All those things you get for FREE
– business logic, objects,
database tables etc, etc...
- But beware !!!



- Projects should be manageable
– evolution rather than revolution
- Deliver something within 3 months
- True Business Ownership needed
- Use the standard SAP business objects
and processes – just give them your flavour



- Users learn – difficult to only train!!
- Real life scenarios for users
- Be prepared for on the job training and system redesign at go live
- Hands on multi-skilled resources
- Long tail to the project in terms of continuous improvement
- Internal IS resources ?
- Design for change / flexibility





- Ongoing improvements
- Housekeeping
- Less is more
- Keep to the basics

The future with SAP / SAP Hana etc?



- Be ready – too many non standard business processes can cause issues
- Many restrictions if data has never been cleaned up and open documents resolved
- Ensure transactional efficiency and accuracy



What's next ?

If you're looking to move but can't find the house of your dreams, you may be able to just print out what you're after in the near future.

A San Francisco-based 3D-printing startup, Apis Cor, has come up with an exceedingly affordable solution for building new houses. It can 3D-print concrete walls for a small house in under 24 hours.

<https://youtu.be/GUdnrtjT5Q>





THANK YOU

eric.kreft@za.afrisam.com



SAPHILA 2017

HOSTED BY



SUPPORTED BY

